



Part no.: 560342
BT-SET-240BCS
Mounting bracket set

Figure can vary

Contents



- Technical data
- Set consists of
- Dimensioned drawings

Part no.: 560342 – BT-SET-240BCS – Mounting bracket set

Technical data

Basic data	
Suitable for	MLD 500, MLD 300 multiple light beam safety devices
Mechanical data	
Type of fastening, at system	Through-hole mounting
Type of fastening, at device	Clampable
Type of mounting device	Turning, 240° Shock absorber
Mounting device material	Metal
Classification	
eCl@ss 8.0	27279202
eCl@ss 9.0	27273701
ETIM 5.0	EC003015
ETIM 6.0	EC003015

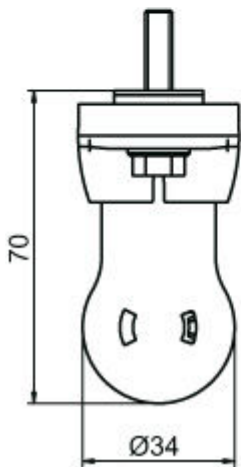
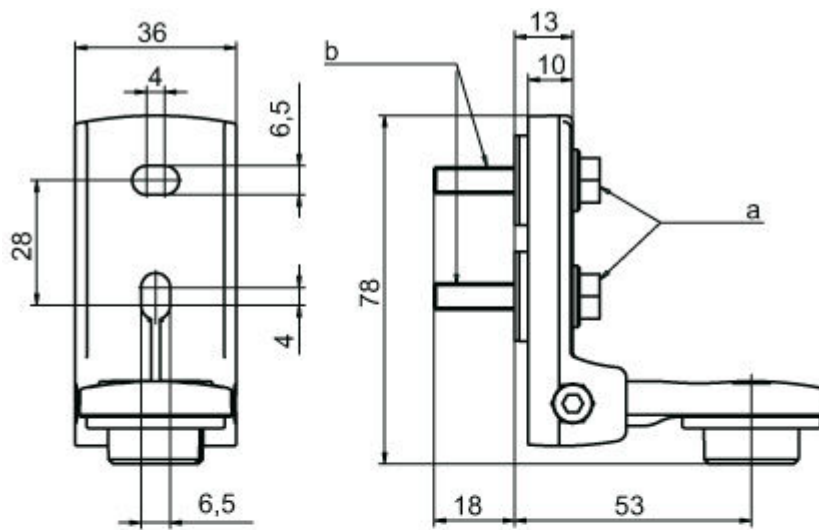
Set consists of

	Quantity	Part no.	Designation	Article	Description
	1	560346	BT-SET-240BS	Mounting bracket	Fastening, at system: Through-hole mounting Mounting bracket, at device: Clampable Type of mounting device: Turning, 240°, Shock absorber Material: Metal Shock absorber: Yes
	1	560345	BT-SET-240CS	Mounting bracket	Fastening, at system: Through-hole mounting Mounting bracket, at device: Clampable Type of mounting device: Turning, 240°, Shock absorber Material: Metal Shock absorber: Yes

Dimensioned drawings

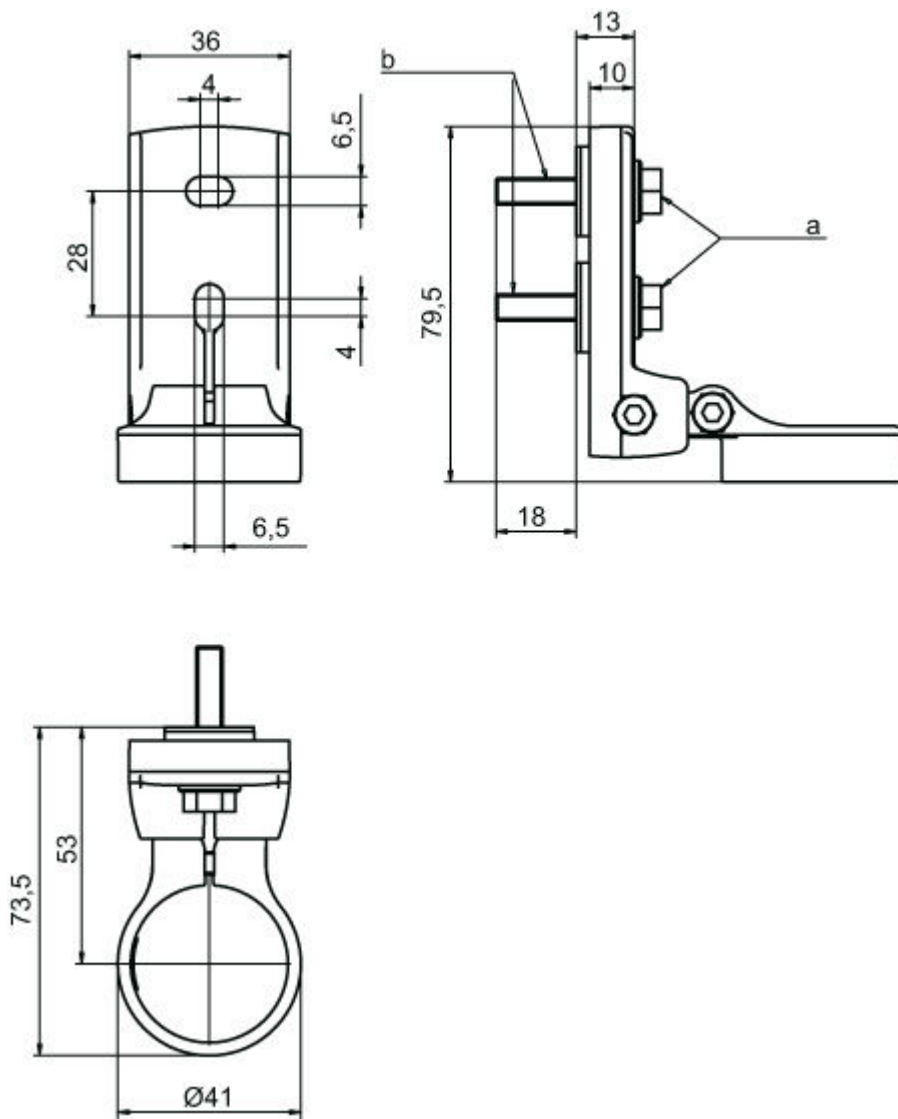
All dimensions in millimeters

BT-SET-240BS swivel mount



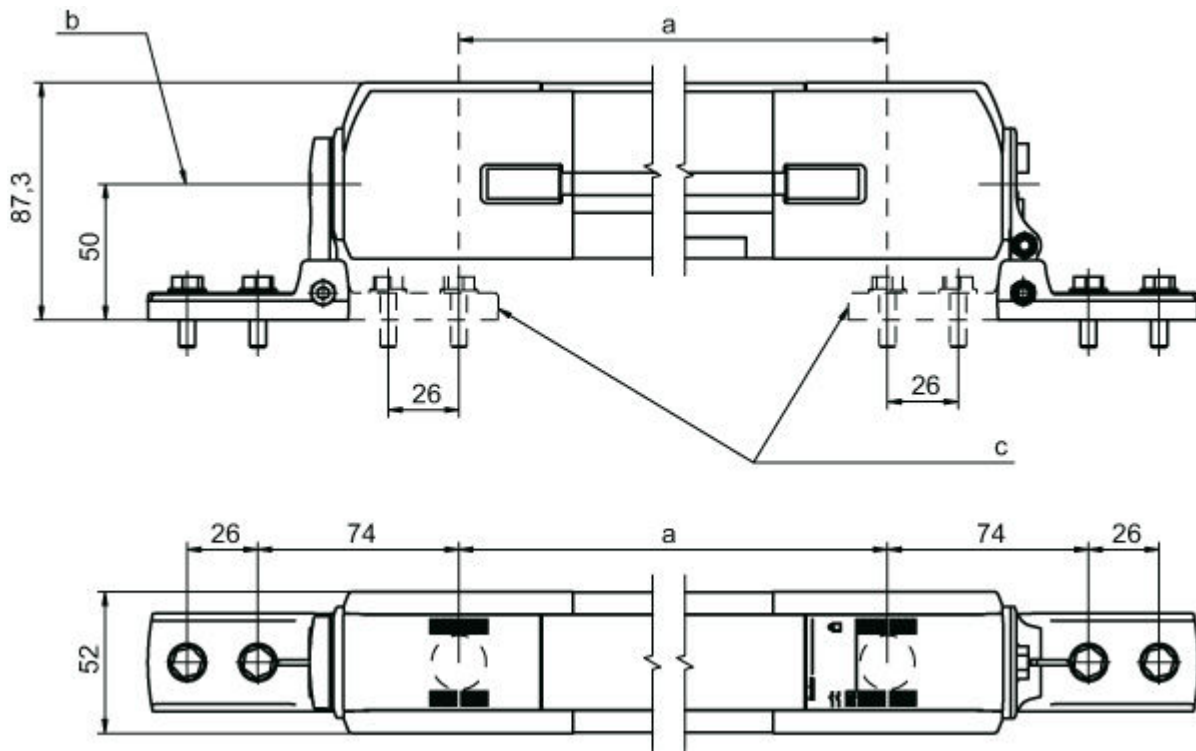
- a M6 screw
- b Shock absorber, M6 thread

BT-SET-240CS swivel mount



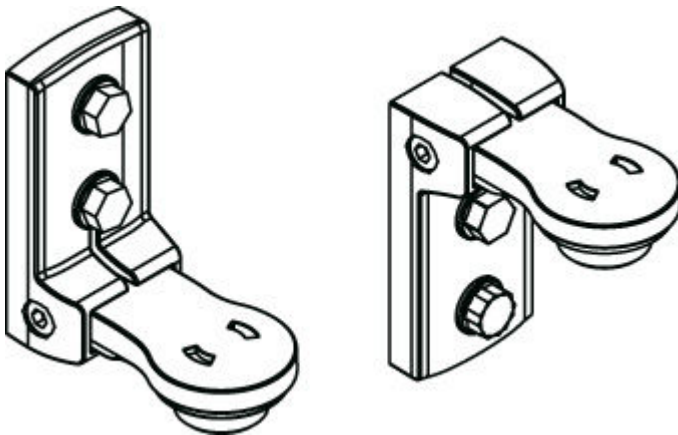
- a M6 screw
- b Shock absorber, M6 thread

Mounting dimensions



- a Beam spacing
- b Swivel axis
- c Alternative mounting variant

Mounting variants



Mounting variants

