

## Magnetic sensor 153

### Product characteristics

- Flat magnetic sensor on reed-contact basis
- PA housing
- 26 x 36 x 13 mm
- PVC cable

### Technical drawing

IMAGE 1/2

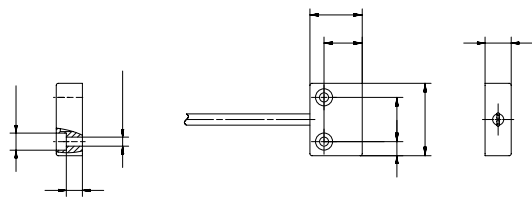


IMAGE 2/2



## Electrical data

Attribute	153210	153220	153230
Max. switching voltage	48 V DC		
Max. switching voltage	48 V AC		
Max. switching current	0.5 A		1 A
Max. switching power	10 W		
Contact form	NO	NC	CO
Technology	Reed		
LED display	No		
Actuation	arbitrary		
Switching principle	magnetic		

## Mechanical data

Attribute	153210	153220	153230
Dimensions	36x26x13		
Housing design	cuboid		

## Material information

Attribute	153210	153220	153230
Housing material	PA6		
Cable material	PVC		

## Environmental conditions

Attribute	153210	153220	153230
Protection class	IP67 DIN EN 60529		
Operating temperature min.	-25 °C		
Max. operating temperature	75 °C		
Min. storage temperature	-25 °C		
Max. storage temperature	75 °C	70 °C	75 °C
Min. cable temperature range, moving	-5 °C		-15 °C
Max. cable temperature range, moving	70 °C		80 °C
Min. cable temperature range, fixed installation	-25 °C		-40 °C
Max. cable temperature range, fixed installation	70 °C		80 °C

## Installation

Attribute	153210	153220	153230
Mounting type	screwed		

## Connection

Attribute	153210	153220	153230
Cable length	1 m		