



## Hose connection sets

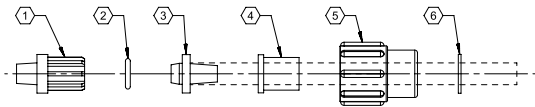
The connection set provides variability for different hose diameters. Various seals are included with the set.

### Product characteristics

- Set includes various diameters from  $\varnothing 4 \times 6 \text{mm}$  to  $\varnothing 6 \times 12 \text{mm}$
- FKM, EPDM and PTFE seals

### Technical drawing

IMAGE 1/1



- ① collet - PP
- ② o-ring - EPDM black, PTFE white, FKM green
- ③ cone for tube connection - PVDF
  - inside  $\varnothing 3$
  - inside  $\varnothing 4$
- ④ shell for tube connection - PP
  - inside  $\varnothing 8$
  - inside  $\varnothing 9$
  - inside  $\varnothing 10$
- ⑤ screw  $\frac{3}{8}$  - 18 UNF - PP
- ⑥ clamping ring - 1.4571

## Properties

<b>Attribute</b>	<b>35207010</b>
<b>Suitable for</b>	Sauglanze mit Gewindeabgang

## Material information

<b>Attribute</b>	<b>35207010</b>
<b>Material</b>	PP/PVDF
<b>Sealing material</b>	FKM/EPDM/PFE

## Installation

<b>Attribute</b>	<b>35207010</b>
<b>Hose diameter</b>	Ø4x6mm, Ø5x8mm, Ø5x9mm, Ø6x8mm, Ø6x9mm, Ø6x10mm, Ø6x12mm