



Float level sensor 2..2 / 2..3

This analogue float level sensor is available with a pipe length of up to 2500 mm. The fluid level sensor is also available with a 360° rotatable head which offers additional flexibility for mounting.

The float level sensor is optionally available with LCD display or remote control for simple programming.

There is wide range of possible applications for this level sensor. The choice of available materials, length and resolution means it can be used in virtually any industrial or automotive application.

Product characteristics

- Level measurement on reed-contact basis
- Available mounting threads: G 1.5 , G 2 1.5 NPT or 2 NPT
- Available with pipe length up to 2500 mm (on request)
- Material: PVC, PP, PA 12, stainless steel or PVDF
- Current or voltage output available
- Up to 4 freely programmable switching points
- Measurement resolution at intervals of 10-35 mm (standard 10 mm / 20 mm)
- Temperature range from -20 °C to +70 °C

Technical drawing

IMAGE 1/6

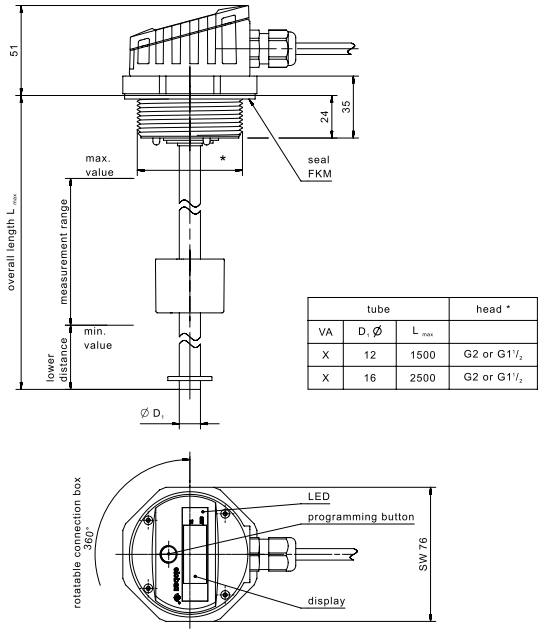


IMAGE 2/6

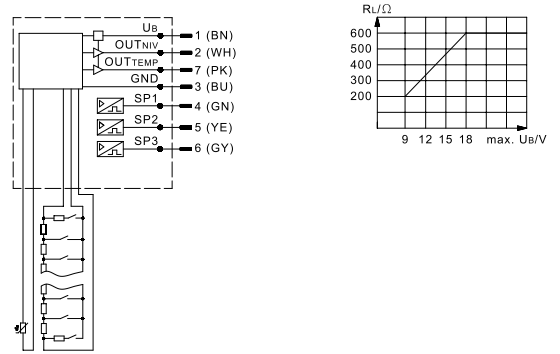


IMAGE 3/6

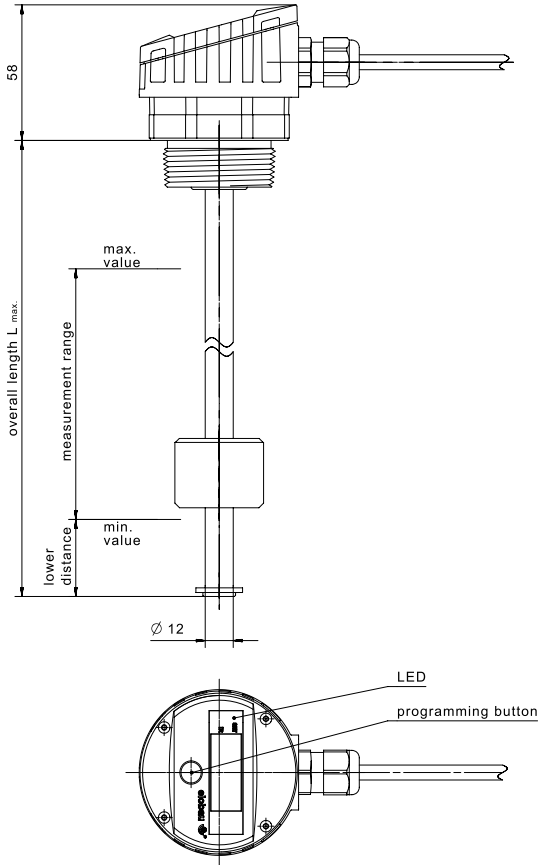


IMAGE 4/6

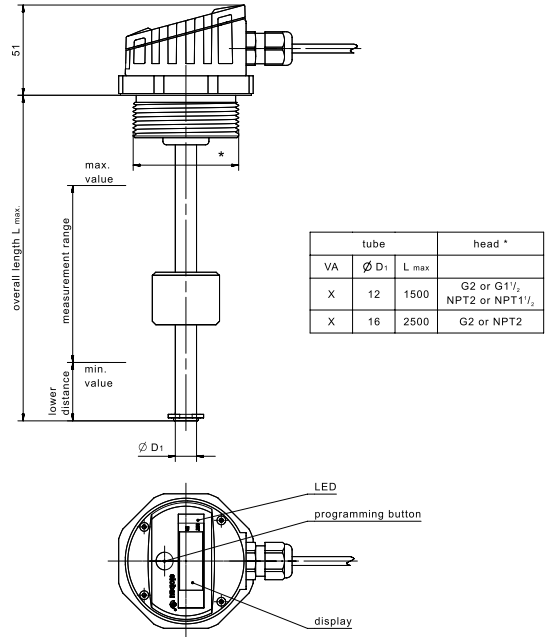
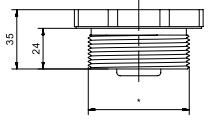
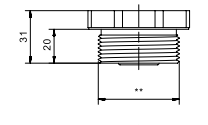
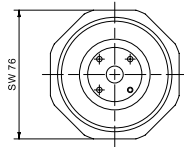


IMAGE 5/6



for Ø 16 tube	for Ø 12 tube	head thread ** G2 NPT2	material		
x	x	x	PVC	PVDF	PP
x	x	x	x	x	x



for Ø 12 tube	head thread ** G1 1/2 NPT1 1/2	material		
x	x	PVC	PVDF	PP
x	x	x	x	x

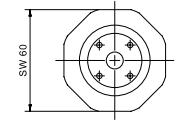
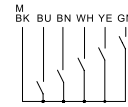
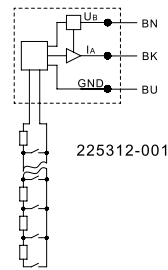
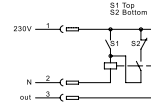


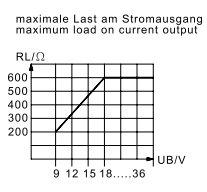
IMAGE 6/6



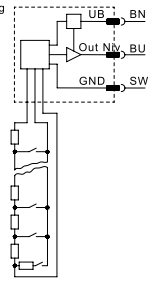
222313-001



225312-001



205322-003



Electrical data

Attribute	212232....	215232....	222213....	225213....
Min. switching voltage	9 V DC		-	
Max. switching voltage	32 V DC		-	
Max. switching current	0.5 A			
Polarity reversal protection	yes			
Switching output	low-side (open drain)		-	
Output signal max.	-		4.5 V DC	
Output signal min.	4 mA		-	
Output signal max.	20 mA		-	
EMC immunity (Norm)	DIN EN IEC 61000-6-2		DIN EN 13309 DIN EN 14982 ISO 13766 ECE-R10	
EMC emission (Norm)	DIN EN 55011		DIN EN 13309 DIN EN 14982 ISO 13766 ECE-R10	
Operating voltage min.	9 V DC			
Operating voltage max.	32 V DC		36 V DC	
Current consumption	68 mA		30 mA	
Linearity error	2 %			
Technology	Reed			
Outputs	analogue + digital		analogue	
Number of switching outputs	3		0	
Temperature output	yes		no	
Output signal min.	-		0.5 V DC	
Lower blind zone	siehe Bestellschlüssel			
Spacing	siehe Bestellschlüssel			

Properties

Attribute	212232....	215232....	222213....	225213....
Application area	Industry		Vehicle	
Rotatable head	yes			

Mechanical data

Attribute	212232....	215232....	222213....	225213....
Recommended minimum density of the medium	0.65 g/cm ³			
Float diameter	39 mm			

Material information

Attribute	212232....	215232....	222213....	225213....
Housing material	PA12			
Float material	PA12			
Riser material	VA 1.4571			
Cable material	PVC		-	
Sealing material	FKM (Viton)		NBR	

Environmental conditions

Attribute	212232....	215232....	222213....	225213....
Protection class, mechanical	IP67 DIN EN 60529		IP67 DIN EN 60529 - IP6K9K ISO 20653	
Operating temperature min.	-20 °C		-40 °C	
Max. operating temperature	70 °C		85 °C	
Min. storage temperature	-30 °C		-40 °C	
Max. storage temperature	80 °C		85 °C	
Vibration resistance (Norm)	DIN EN 60068-2-6 DIN EN 60068-2-64			
Pressure resistance	3 bar			
ESD insulation resistance (Norm)	DIN EN 61000-4-2		ISO 10605	

Installation

Attribute	212232....	215232....	222213....	225213....
Mounting type	Thread			
Thread	G 2	G 1 1/2	G 2	G 1 1/2
Riser diameter	12 mm			
Installation opening	G 2	G 1 1/2	G 2	G 1 1/2
Torque	40 N m			

Connection

Attribute	212232....	215232....	222213....	225213....
Connector type	M12		AMP Super Seal 3pol	
Cable length	3 m		-	