

Emergency stop enclosure NHG01

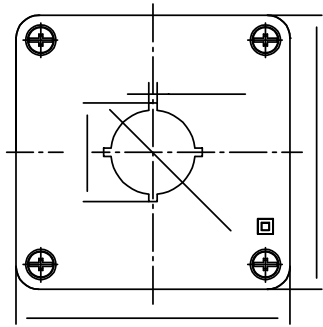
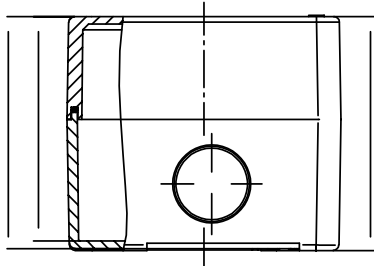
Surface-mounted housing for installing emergency stop buttons

Product characteristics

- ISO surface-mounted housing in IP65/IP69K (depending on the used E-stop button)
- For simple installation of the NHT.. emergency stop buttons with KE.. contact elements

Technical drawing

IMAGE 1/1



Mechanical data

| Attribute | NHG01 |
|------------|---------------------------|
| Dimensions | 72 x 72 x 62,5 mm (H/B/T) |

Material information

| Attribute | NHG01 |
|------------------|-----------------------------------|
| Housing material | Kunststoff |
| Housing colour | Unterteil: schwarz Oberteil: gelb |

Environmental conditions

| Attribute | NHG01 |
|------------------|-------------------|
| Protection class | IP68 DIN EN 60529 |

Installation

| Attribute | NHG01 |
|----------------------|-----------|
| Mounting type | screwed |
| Weight | 96 g |
| Installation | arbitrary |
| Installation opening | Ø22,3 mm |
| Installation depth | 59 mm |

Approvals

| Attribute | NHG01 |
|------------------------------|-------------------|
| Certified in accordance with | UL 508 / CSA 22.2 |