



## Coupling socket and coupling connector 35115

### Product characteristics

- Field-attachable connectors and sockets M12, 4-pin
- Flexible cable lengths possible through elf-assembly

### Technical drawing

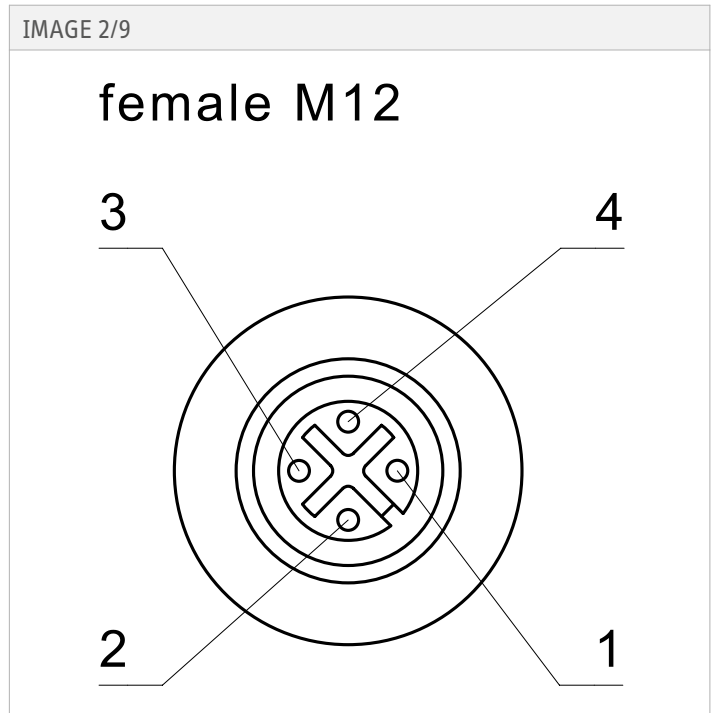
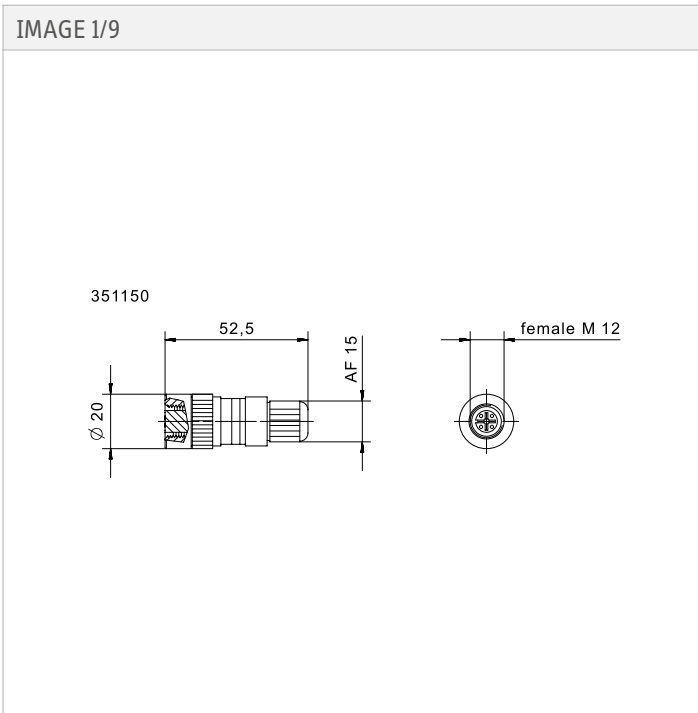


IMAGE 3/9

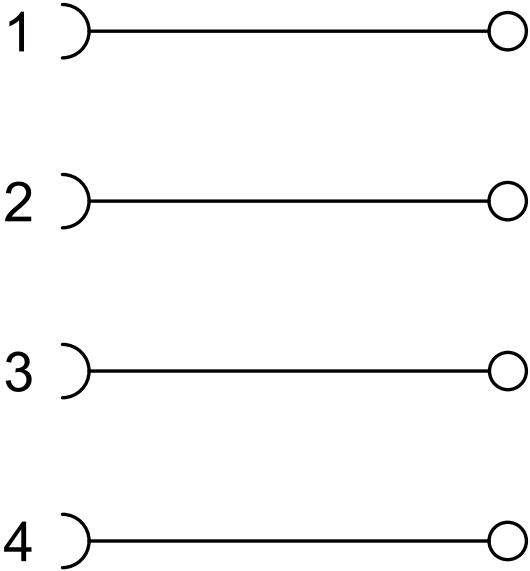


IMAGE 4/9

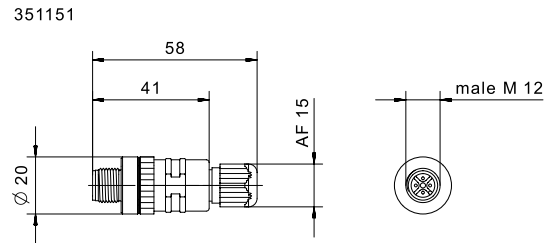


IMAGE 5/9

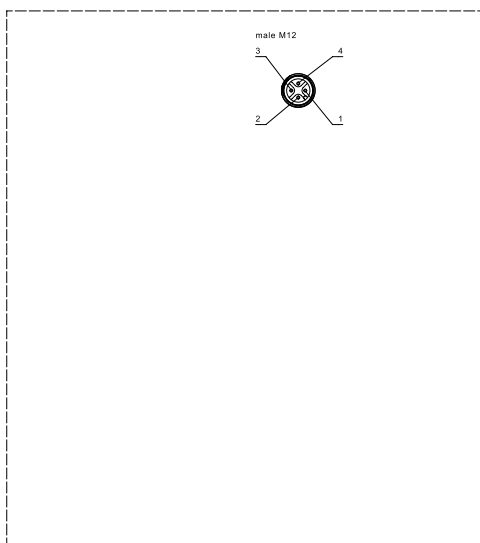
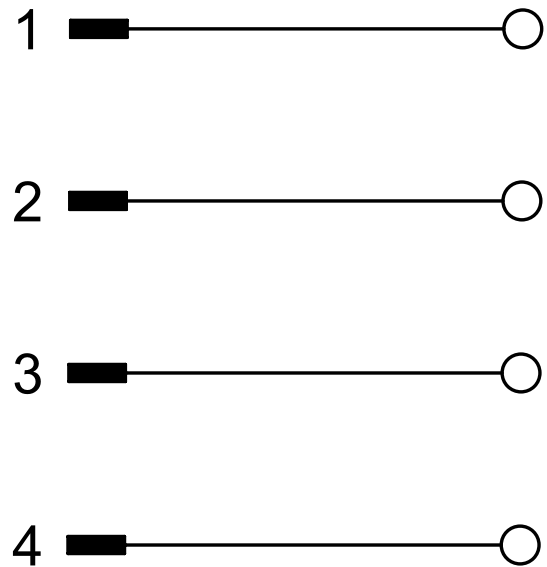


IMAGE 6/9




 sensor technology	Maßstab	Benennung
	Revision	Kupplungsdose
	Gest. Datum	Nummer
Status	29.03.19	Cat_351151
	Gepüft	pr1mi

IMAGE 7/9

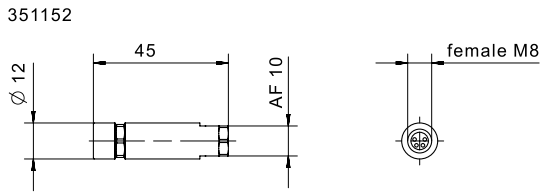


IMAGE 8/9

# female M8

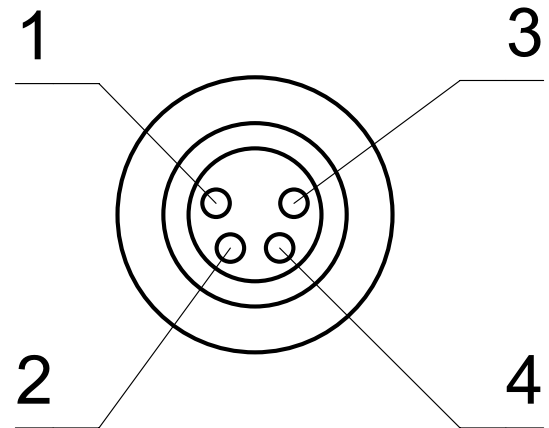
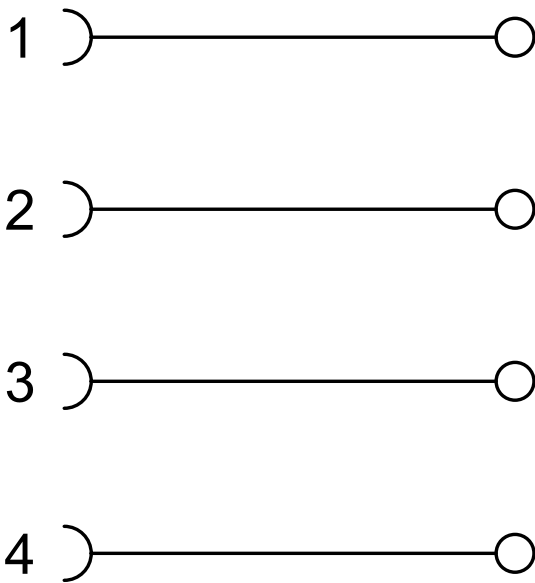


IMAGE 9/9



## Electrical data

Attribute	351150	351151	351152	351153
Max. switching current per contact	4 A			
Rated impulse withstand voltage (Uimp)	2500 V		800 V	
Pollution degree	3			
Operating voltage max.	240 V DC			
Operating voltage max.	240 V AC			

## Material information

Attribute	351150	351151	351152	351153
Nut material	CuZi vernickelt			
Overmould material	PA			

## Environmental conditions

Attribute	351150	351151	351152	351153
Operating temperature min.	-40 °C			
Max. operating temperature	85 °C			
Min. storage temperature	-40 °C			
Max. storage temperature	85 °C			

## Installation

Attribute	351150	351151	351152	351153
Torque for nuts	0,5 N m			
Weight	23 g		10 g	

## Connection

Attribute	351150	351151	351152	351153
Connector type	M12 Buchse gerade	M12 Stecker gerade	M8 Buchse gerade	M8 Stecker gerade
Connection type	Schraubverschluss			
Cable diameter	3 - 6,5 mm		3,5 - 5,5 mm	
Number of pins	4			
Min. connection cross section	0.14 mm <sup>2</sup>			
Max. connection cross section	0.75 mm <sup>2</sup>		0.5 mm <sup>2</sup>	

## Approvals

Attribute	351150	351151	351152	351153
Certified in accordance with	UL 2238/CSA22.2			