



Magnetic sensor 133

Product characteristics

- Magnetic sensor on reed-contact basis
- Small and sturdy brass housing with external thread and fastening nuts for space-saving installation
- M5 x 26 mm
- PVC cable

Technical drawing

IMAGE 1/2

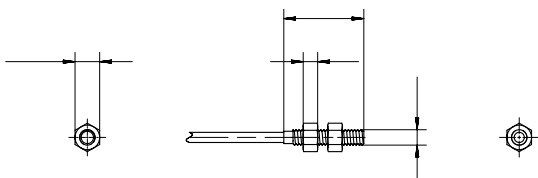


IMAGE 2/2



Electrical data

Attribute	133210	133220	133230
Max. switching voltage	48 V DC	30 V DC	48 V DC
Max. switching voltage	48 V AC	30 V AC	48 V AC
Max. switching current	0.5 A	0.2 A	0.5 A
Max. switching power	10 W	3 W	5 W
Technology	Reed		
Contact form	NO	NC	CO
LED display	No		
Actuation	front		
Switching principle	magnetic		

Mechanical data

Attribute	133210	133220	133230
Dimensions	M5x26		
Housing design	cylindrical		

Material information

Attribute	133210	133220	133230
Housing material	Messing		
Nut material	Messing		
Cable material	PVC		

Environmental conditions

Attribute	133210	133220	133230
Protection class	IP67 DIN EN 60529		
Operating temperature min.	-25 °C		
Max. operating temperature	75 °C		70 °C
Min. storage temperature	-25 °C		
Max. storage temperature	75 °C		70 °C
Min. cable temperature range, moving	-25 °C		-5 °C
Max. cable temperature range, moving	80 °C		70 °C
Min. cable temperature range, fixed installation	-40 °C		-25 °C
Max. cable temperature range, fixed installation	80 °C		70 °C

Installation

Attribute	133210	133220	133230
Mounting type	screwed		

Connection

Attribute	133210	133220	133230
Cable length	1 m		